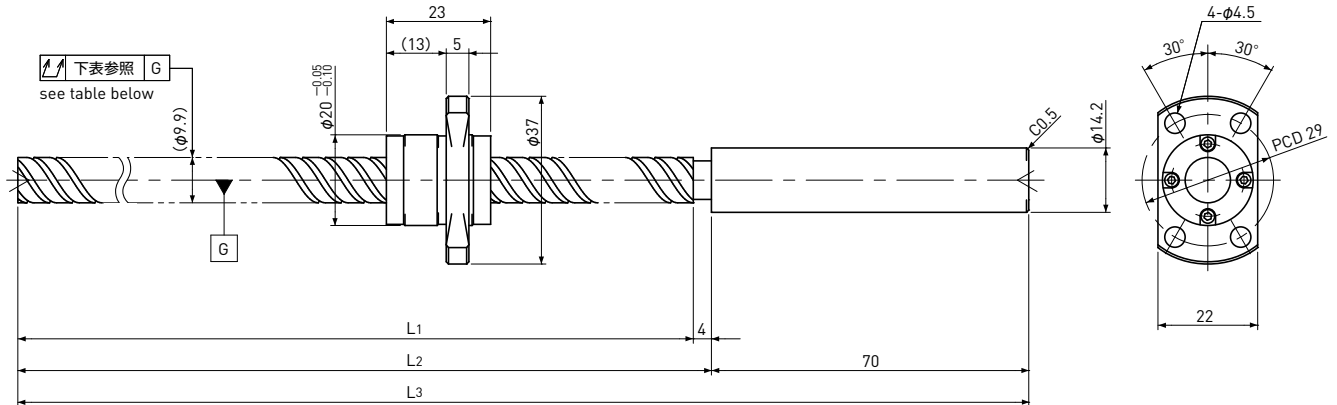


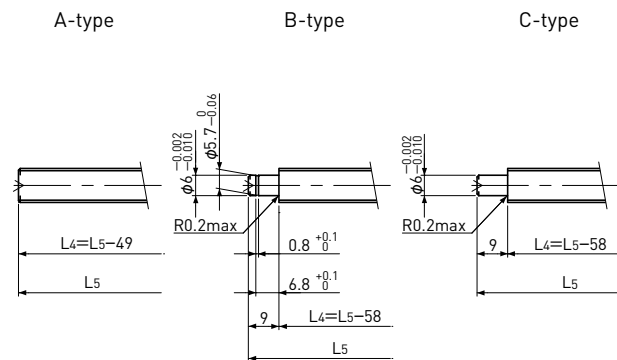
# SRT1020 | Shaft dia.(軸径) $\phi 10$ Lead(リード) 20mm | Ct7&Ct10



Unit(単位): mm

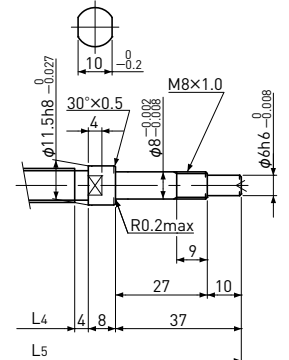
| Ball Screw Specifications 諸元 |         |                     |
|------------------------------|---------|---------------------|
| Ball size ボール径               |         | $\phi 1.5875$       |
| Number of thread 条数          |         | 4                   |
| Thread direction 巻方向         |         | Right 右             |
| Shaft root dia. ねじ軸谷径        |         | $\phi 8.7$          |
| Number of circuit 循環数        |         | $0.7 \times 4$      |
| Material 材質                  | Shaft 軸 | SCM415H+SUS303      |
|                              | Nut ナット | SCM415H             |
| Surface hardness ねじ部表面硬度     |         | HRC58~(Thread area) |
| Anti-rust treatment 防錆処理     |         | Anti-rust oil 防錆油   |

End-journal profile 端末加工形状 Supported-side 支持側



L4: Thread length after end-journal machining. 追加工後のねじ部長さ  
L5: Total length after end-journal machining. 追加工後全長

Fixed-side 固定側



| Support-unit Recommendation 推奨サポートユニット | Supported-side 支持側 | Fixed-side 固定側 |
|--|--------------------|----------------|
|  | MSU-8CS/8GS        | MSU-8C/8G      |

D-type: Other than the above. 上記以外の形状

Unit(単位): mm

| Ball Screw Model<br>ボールねじ型番 | Travel<br>ストローク | Grade<br>精度 | Shaft length<br>ねじ軸長さ |     |     | Lead accuracy<br>リード精度               |                              | Total Run-out<br>全振れ | Axial play<br>軸方向すきま | Preload Torque<br>予圧トルク<br>Nm | Basic Load Rating<br>基本定格荷重 N |                           |
|-----------------------------|-----------------|-------------|-----------------------|-----|-----|--------------------------------------|------------------------------|----------------------|----------------------|-------------------------------|-------------------------------|---------------------------|
|                             |                 |             | L1                    | L2  | L3  | Travel deviation<br>代表移動量誤差<br>$e_p$ | Variation<br>変動<br>$V_{300}$ |                      |                      |                               | Dynamic<br>動定格荷重<br>$C_a$     | Static<br>静定格荷重<br>$C_oa$ |
| SRT1020-196R270C7           | 170             | Ct7         | 196                   | 200 | 270 | $\pm 0.03$                           | —                            | 0.080                | ~0.020               | —                             | 2100                          | 4000                      |
| SRT1020-396R470C7           | 370             | Ct7         | 396                   | 400 | 470 | $\pm 0.06$                           | 0.05                         | 0.120                |                      |                               |                               |                           |
| SRT1020-196R270C10          | 170             | Ct10        | 196                   | 200 | 270 | $\pm 0.13$                           | —                            | 0.160                | ~0.050               | —                             | 2100                          | 4000                      |
| SRT1020-396R470C10          | 370             | Ct10        | 396                   | 400 | 470 | $\pm 0.27$                           | 0.21                         | 0.240                |                      |                               |                               |                           |

Note ) Please refer to page A287 for order code of end-journal machining. 注) 追加工の呼び番号指定方法はページA287をご参照ください。